



Prince Foundations Ltd.

Prince Apartments, #59, Ormes Road, Kilpauk, Chennai - 600 010

call: 044 - 2661 0051 / 61 / 71 | email: mktg@princefoundations.com | website: www.princefoundations.com

Site Address: Plot No. 8, Ellaya Mudali Street, Tondiarpet (Next to Metal box), Chennai 600 081

CONTACT:

99401 38000 / 99401 39000 / 99400 51955 / 87544 90400

Disclaimer: The plans, designs, layout, etc. shown here in are merely indicative and are not binding on us. Prince Foundations Limited retains the right to change, alter or modify the specifications at any time without issuing notice to anybody at its sole discretion.



NOW ENJOY **MORE** BREATHING SPACE IN TONDIARPET



62% OPEN AREA | PEACEFUL SURROUNDINGS | ECO FRIENDLY ENVIRONMENT | EFFICIENT SIZES
AFFORDABLE PRICE | QUALITY CONSTRUCTION | TIMELY COMPLETION



Prince Foundations Ltd., Corporate Office,
Old No. 17, New No. 61, Ormes Road, Kilpauk, Chennai
(Shifting Shortly)

CREATING NEXT GENERATION LANDMARKS

At Prince, we start every project with a very special ingredient - commitment. We then add meticulous planning, adherence to governmental norms, the finest material and mix it with loads of professionalism. The resultant mixture is then poured out to create the finest apartments with thoughtful features, effective space utilization and life enhancing amenities. And while creating this unique place we ensure that nature gets its rightful due so that the air you breathe is fresh everyday. Finally we wrap the project with complete transparency and helpful service so that you will experience the happy feeling of a **Promise Delivered...**



PRINCE INFOCITY,
Kandanchavady - OMR
(IT Park) 2.90 lakh sq.ft.



PRINCE INFOCITY II,
Kandanchavady - OMR
(IT Park) 7.70 lakh sq.ft.



PRINCE TECHNO PARK,
Thoraipakkam - OMR
(IT Park) 1.87 lakh sq.ft.



PRINCE INFO PARK, Ambattur
(IT Park) 3.00 lakh sq.ft.



PRINCE GREENWOODS, Athipet
(216 Residential Flats), 2.80 lakh sq.ft.



PRINCE RESIDENZIA, SRIPERUMBUDUR
(440 Residential Flats), 5.81 lakh sq.ft.

COMPLETED PROJECTS

ONGOING RESIDENTIAL PROJECTS

PRINCE VILLAGE, Tondiarpet
(582 Flats), 5.31 lakh sq.ft.

FORTHCOMING RESIDENTIAL PROJECTS

PRINCE HIGHLANDS, Ayyapanthangal
(Next to Ramachandra Medical College - Porur)

PRINCE CHALET, Pudupakkam
(Behind sipcot IT Estate-Siruseri, OMR)

PRINCE COURTYARD, Egmore
(Poonamallee High Road, Previously known as Dasaprakash Hotel)

PRINCE LE GRANDE, Pudupakkam
(Behind Sipcot IT Estate- Siruseri, OMR)

PRINCE GALADA GARDENS
(E.V.K Sampath Road, Vepery)

PRINCE PALAZZO, Pudupakkam
(Behind Sipcot IT Estate- Siruseri, OMR)

Prince Foundations brings you spacious & affordable homes in the heart of the city.

Launching Phase II of Prince Village at Tondiarpet.

Spread over 6.5 acres of lush greenery, Prince Village is a residential haven which consists of 460 flats having an option of 1, 2, & 3 BHK. It also encompasses 10,000 sq. ft. of commercial building area. Which means, you have a unisex salon, departmental store, ATM, pharmacy and much much more, right within your compound.

What's more, it enjoys close proximity to renowned educational institutions, hospitals, shopping malls and there is a proposed mono rail project on the anvil too. Like all Prince projects, Prince Village boasts of a host of world class modern amenities together to make for convenient living indeed.

Go on, choose Prince Village and end your wait for a dream home...

PROPOSED ELEVATION



ROUTE MAP



KEY DISTANCES FROM PRINCE VILLAGE*

H5 Police Station	0.5 Km
Port Trust Play Ground	0.8 Km
Tondiarpet Railway Station	1.0 Km
St. Sheba School	1.5 Km
St. Thomas School	1.5 Km
Apollo Hospital	2.2 Km
Thyagaraja College	2.5 Km
Axis Bank (Old Washermanpet)	2.5 Km
Mint Clock Tower	5.7 Km
GPO	6.1 Km
Central Station	8.0 Km
Nataraj Theater	8.1 Km

*APPROXIMATE

SITE PLAN



PHASE C - 288 FLATS

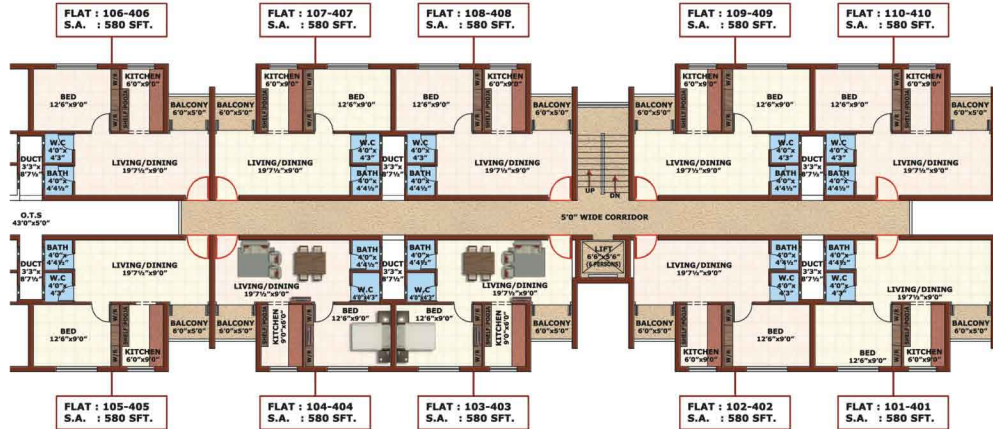
1 BHK	
580 sq.ft. - 80 flats	
2 BHK	
940 sq.ft. - 64	
970 sq.ft. - 128	
985 sq.ft. - 16	

PHASE D - 172 FLATS

2 BHK	1320 sq.ft. - 23	1410 sq.ft. - 4
	1360 sq.ft. - 4	1430 sq.ft. - 8
	985 sq.ft. - 16	1380 sq.ft. - 3
3 BHK	1390 sq.ft. - 8	1455 sq.ft. - 3
	1140 sq.ft. - 4	1395 sq.ft. - 4
	1185 sq.ft. - 4	1400 sq.ft. - 19

TOTAL 460 APARTMENTS

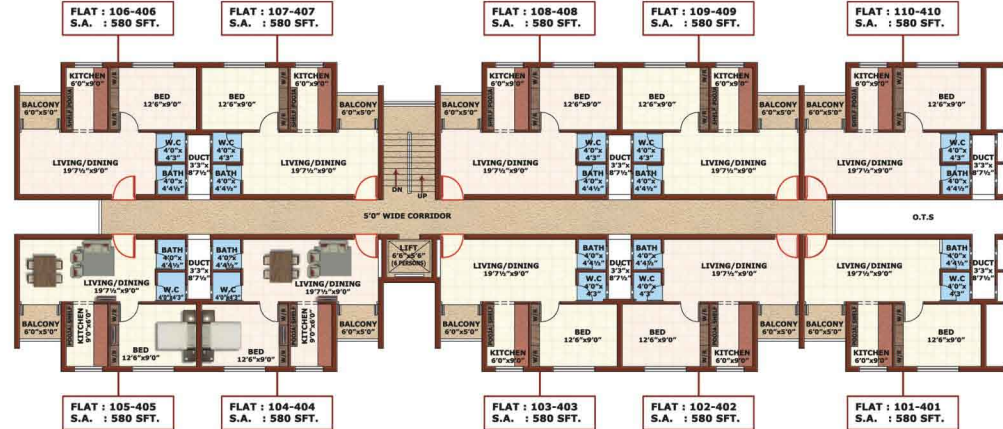
TYPICAL FLOOR PLAN (4 FLOORS)
580 SQ.FT. 1 BEDROOM APARTMENT



BLOCK C1



TYPICAL FLOOR PLAN (4 FLOORS)
580 SQ.FT. 1 BEDROOM APARTMENT

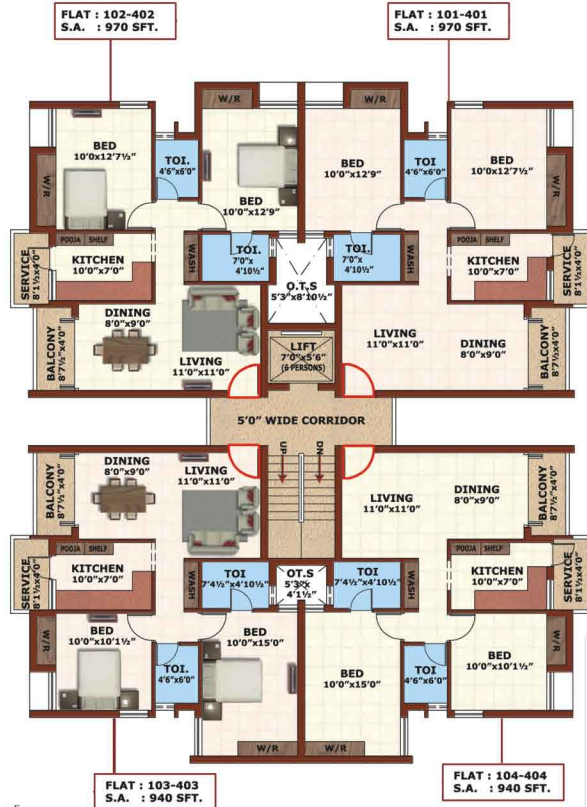


BLOCK C2

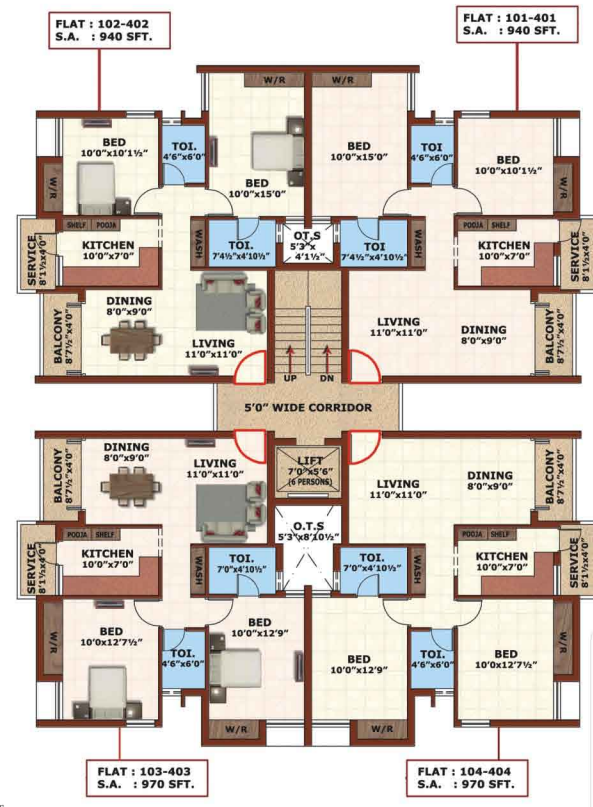


TYPICAL FLOOR PLAN (4 FLOORS)
940 / 970 SQ.FT. 2 BEDROOM APARTMENT

TYPICAL FLOOR PLAN (4 FLOORS)
940 / 970 SQ. FT. 2 BEDROOM APARTMENT



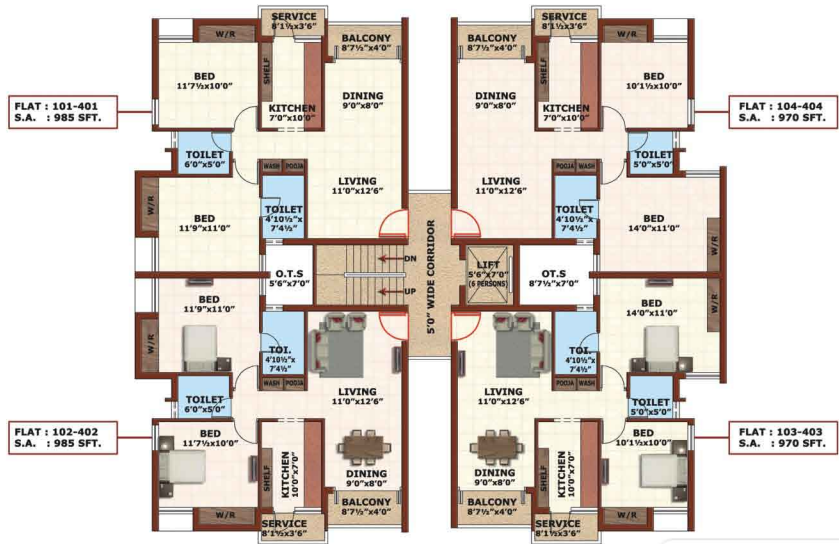
BLOCK C3, C5, C7 & C9



BLOCK C4, C6, C8 & C10



TYPICAL FLOOR PLAN (4 FLOORS)
970 / 985 SQ.FT. 2 BEDROOM APARTMENT



BLOCK C11 & D1



TYPICAL FLOOR PLAN (4 FLOORS)
970 SQ.FT. 2 BEDROOM APARTMENT



BLOCK C12, C13, C14, D2, D3 & D4



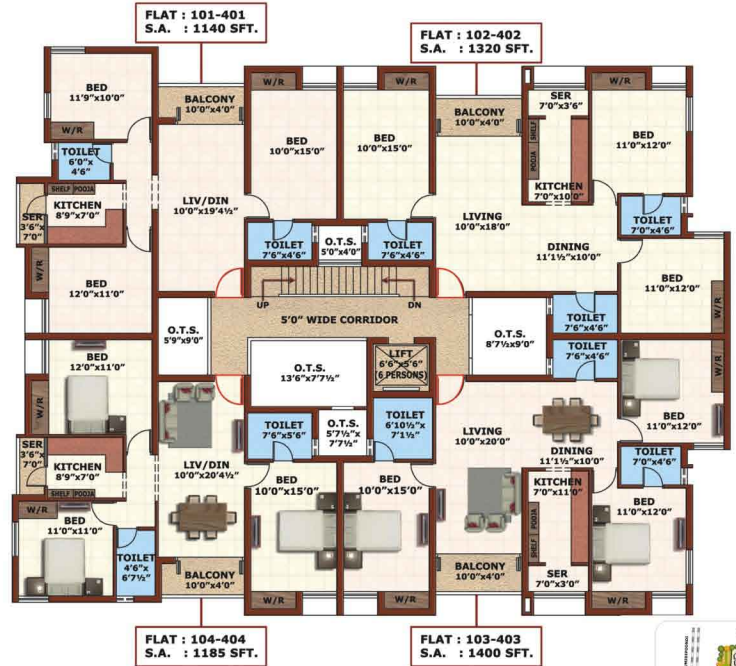
TYPICAL FLOOR PLAN (4 FLOORS)
970 / 985 SQ.FT. 2 BEDROOM APARTMENT



BLOCK C15 & D5



TYPICAL FLOOR PLAN (4 FLOORS)
1140 / 1185 / 1320 / 1400 SQ.FT. 3 BEDROOM APARTMENT

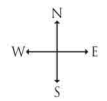


BLOCK D6

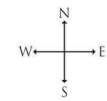


TYPICAL FLOOR PLAN (4 FLOORS)
1320 / 1390 / 1400 SQ.FT. 3 BEDROOM APARTMENT

TYPICAL FLOOR PLAN 2ND, 3RD & 4TH (CLUB HOUSE IN 1ST FLOOR)
1320 / 1380 / 1400 / 1455 SQ.FT. 3 BEDROOM APARTMENT



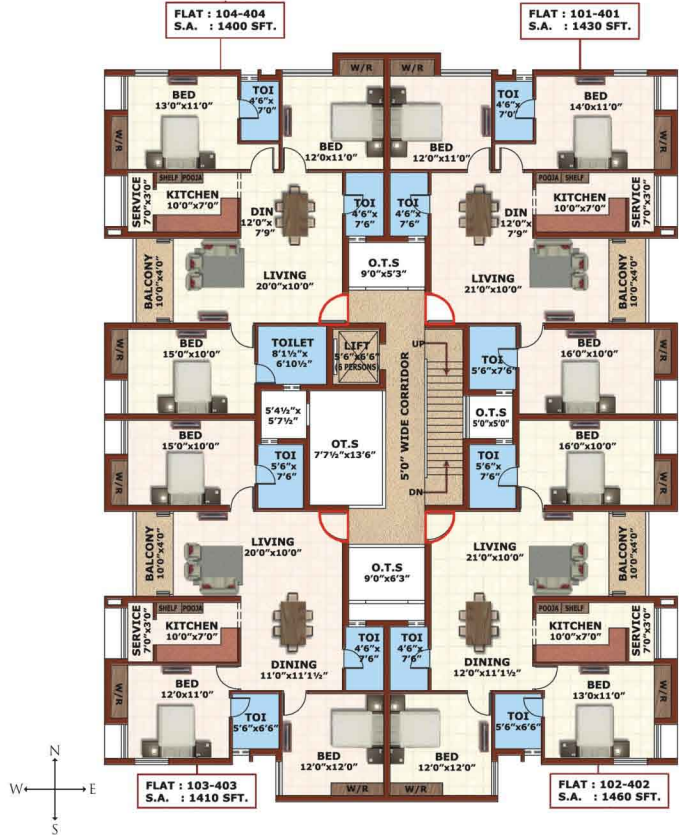
BLOCK D7 & D8



BLOCK D9



TYPICAL FLOOR PLAN (4 FLOORS)
1400 / 1410 / 1430 / 1460 SQ.FT. 3 BEDROOM APARTMENT



BLOCK D10



TYPICAL FLOOR PLAN (4 FLOORS)
1360 / 1395 / 1430 / 1460 SQ.FT. 3 BEDROOM APARTMENT



BLOCK D11





CHILDREN'S PLAY AREA



SHUTTLE COURT



WATER BODIES



PARTY HALL



JOGGING TRACK



BASKETBALL COURT



AIR CONDITIONED GYM



SUPERMARKET



INDOOR GAMES



SKATING RINK



ATM



PHARMACY

SPECIFICATIONS

STRUCTURE

- RCC frame with RC foundations and anti- termite treatment conforming to ISS
- Internal partition wall: 4½"
- Ceiling height: slab to slab - 10'

WALL FINISHES

- Internal walls: Cement Plaster, Wall Putty and O.B.D.
- Toilet walls: 7' Ht glazed with Ceramic Tiles (colour and size as recommended by the architect)
- Balconies and other areas: Cement Plaster and Cement Paint
- Kitchen: Glazed Ceramic Tiles up to 2' above the kitchen platform
- Exterior: Cement Plaster and Exterior Paint

FLOOR FINISHES

- Living & Dining: 2' X 2' Vitrified Tiles
- Bedrooms: 2' X 2' Vitrified Tiles
- Kitchen, Utility : Vitrified Tiles
- Toilets: Ceramic Tiles

COMMON AREA FINISHES

- Staircase & Lobbies: Polished Granite Tiles/Kota Stone
- Car Parks: Granolithic flooring

TOILETS

- White sanitaryware of a branded make
- CP Fittings of a branded make
- Provision for Geyser, Exhaust Fan and other Appliance

DOORS & WINDOWS

- Entrance Doors - Teakwood/Padak Frame, 32 mm thick and Shutter
- Bedrooms - Seasoned Wooden Frame and Painted Flush Door
- Windows: Aluminium/UPVC windows

SPECIFICATIONS

WATER

- Adequate bore wells
- Water treatment plant
- Concealed CPVC pipes
- Water supply lines – UPVC
- Metro water Available

SEWERAGE

- Sewerage treatment plant
- The sewerage will be safely recycled for watering the gardens, flushing etc.
- CMWSSB Available

ELECTRICAL

- Concealed Insulated copper multi-strand wires
- MCB equipped distribution board
- Switch & Socket: Branded

POWER SUPPLY AND GENERATOR

- 3 Phase power supply with generator back up for common area, lifts and pumps

ELEVATORS

- Lift- Kone/ Johnson / Thyssenkrupp / Others

SECURITY

- Gates manned by security personnel 24 x 7

LANDSCAPE

- The project will be adequately landscaped with lush gardens, leaf canopied walkways and seating areas